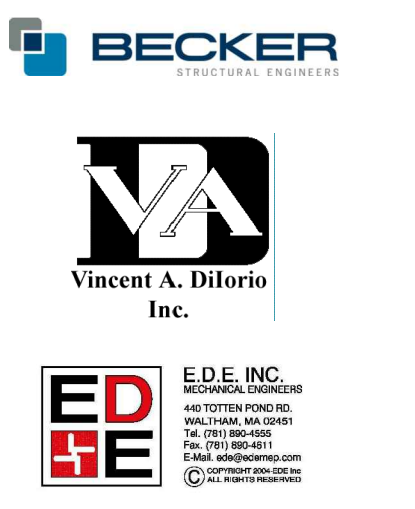


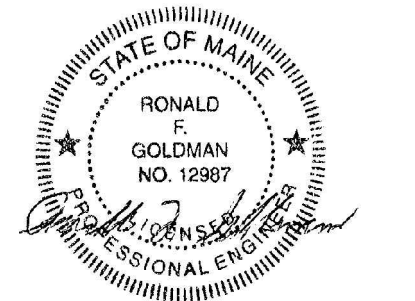


65 NEWBURY STREET
 PORTLAND, ME 04101
 207.761.9000
 info@portcityarch.com
 WWW.PORTCITYARCH.COM

CONSULTANTS



Site Design Associates
 23 Whitney Way
 Topsham, Maine 04086
 207-449-4275



REVISIONS

| No. | Description | Date |
|-----|----------------------|---------|
| ▲ | Add Alternate #1 | 2/08/13 |
| ▲ | First Floor Redesign | 1/09/13 |
| ▲ | Addendum #9 | 8/16/12 |
| ▲ | Addendum #8 | 7/30/12 |

PERMIT DOCUMENTS

UNIVERSITY OF
 NEW ENGLAND
 PORTLAND, MAINE
 PATIENT CARE
 CENTER
 COMP CARE FIT-OUT

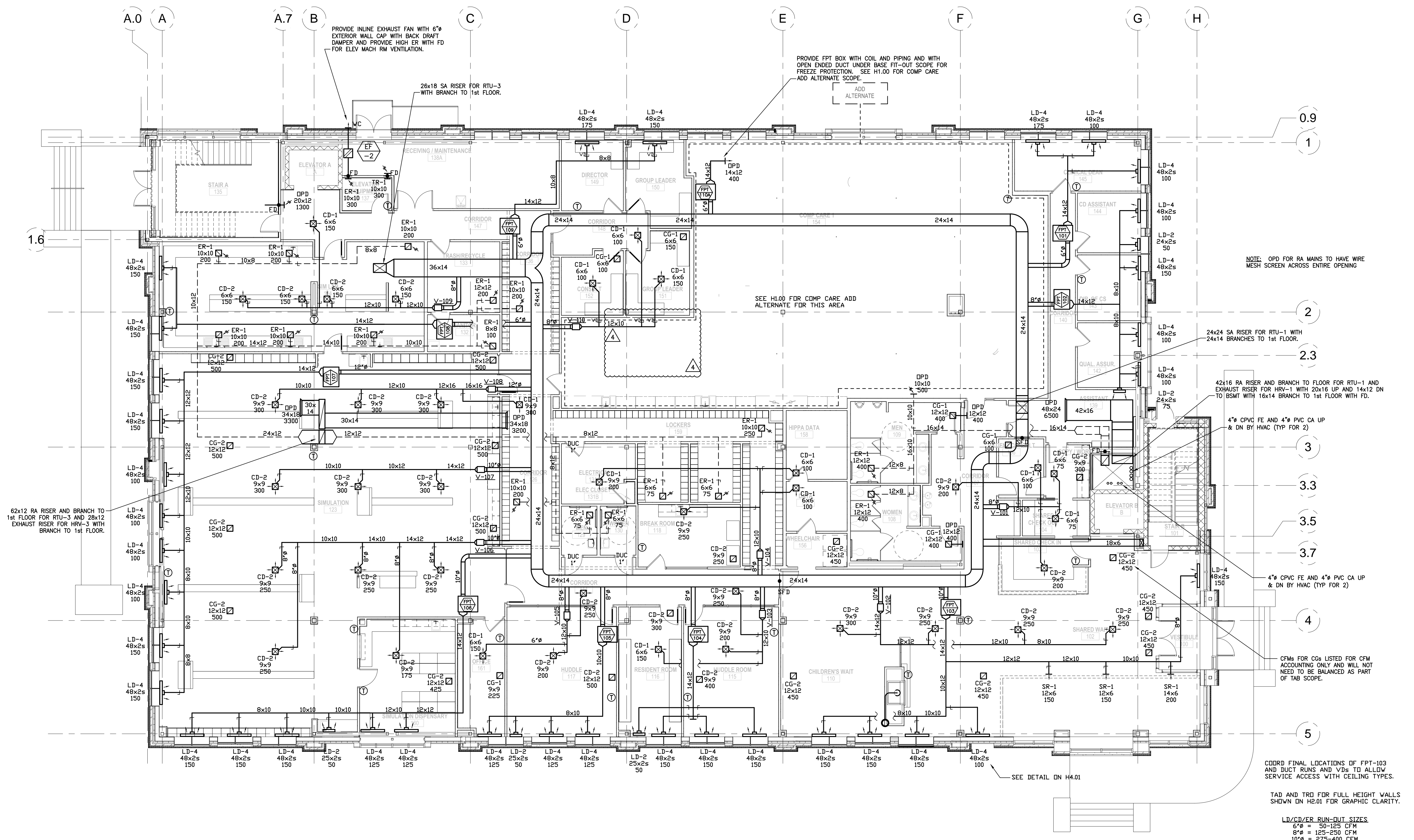
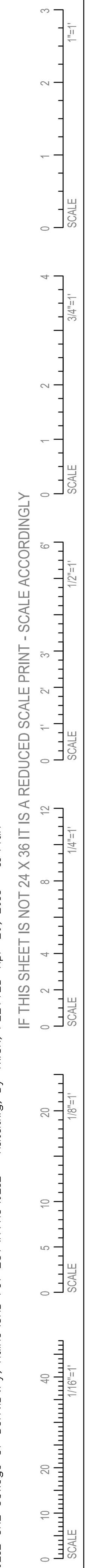
HVAC DUCTWORK
 FIRST FLOOR

| | |
|----------------|----------------|
| Project Number | 12533.00 |
| Date | April 26, 2013 |
| Drawn by | JRK |
| Checked by | KAZ |

H1.01

Scale 1/8" = 1'-0"

IF THIS SHEET IS NOT 24 X 36 IT IS A REDUCED SCALE PRINT - SCALE ACCORDINGLY



HVAC DUCTWORK - FIRST FLOOR PLAN
 SCALE 1/8" = 1'-0"

0.9

1

2

2.3

3

3.3

3.5

3.7

4

5

NOTE: OPD FOR RA MAINS TO HAVE WIRE MESH SCREEN ACROSS ENTIRE OPENING

24x24 SA RISER FOR RTU-1 WITH 24x14 BRANCHES TO 1st FLOOR.

42x16 RA RISER AND BRANCH TO FLOOR FOR RTU-1 AND EXHAUST RISER FOR HRV-1 WITH 20x16 UP AND 14x12 DN TO BSMT WITH 16x14 BRANCH TO 1st FLOOR WITH FD.

4" CPVC FE AND 4" PVC CA UP & DN BY HVAC (TYP FOR 2)

4" CPVC FE AND 4" PVC CA UP & DN BY HVAC (TYP FOR 2)

CFMs FOR CGs LISTED FOR CFM ACCOUNTING ONLY AND WILL NOT NEED TO BE BALANCED AS PART OF TAB SCOPE.

COORD FINAL LOCATIONS OF FPT-103 AND DUCT RUNS AND VDs TO ALLOW SERVICE ACCESS WITH CEILING TYPES.

TAD AND TRD FOR FULL HEIGHT WALLS SHOWN ON H2.01 FOR GRAPHIC CLARITY.

LD/CD/ER RUN-OUT SIZES
 6" = 50-125 CFM
 8" = 125-250 CFM
 10" = 275-400 CFM
 12" = 425-650 CFM

